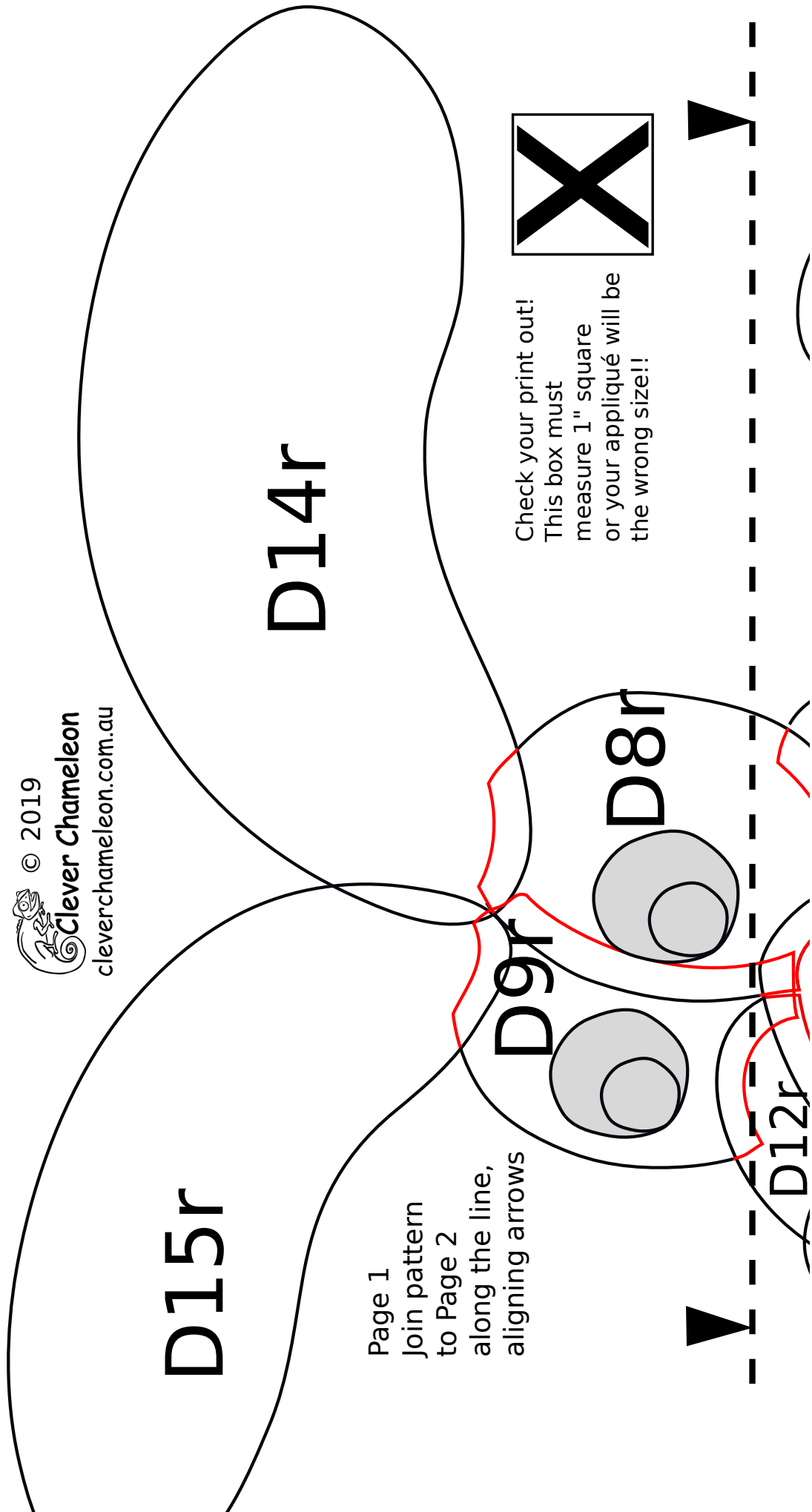


Love with a Twist BOM Block 1B: Dippy Dog

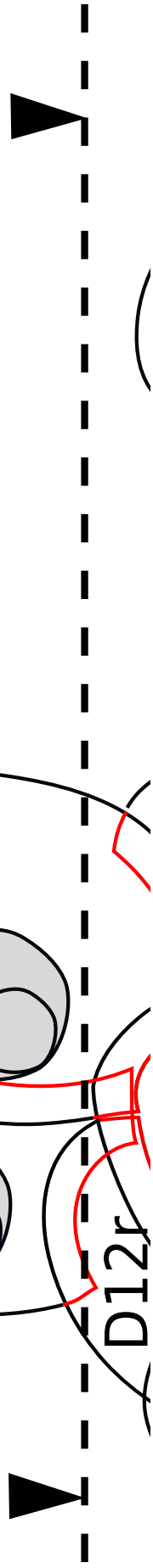
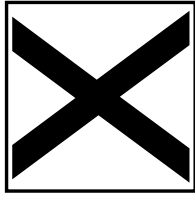
Appliqué Layout Guide: Dog Balloon (left facing)

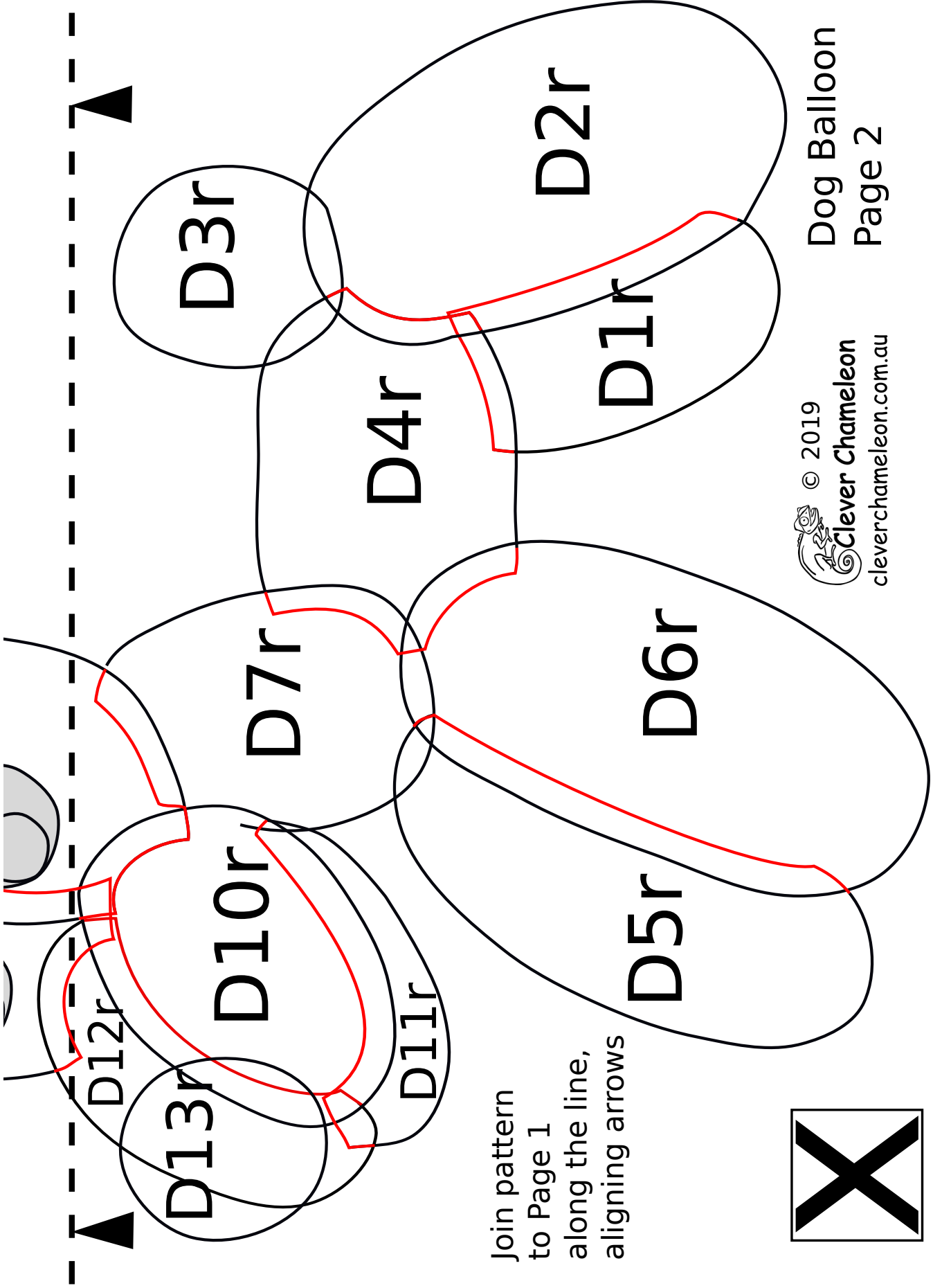
Love with a Twist quilt series designed by Dione Gardner-Stephen. Downloaded from www.cleverchameleon.com.au/balloon-dog/
Full assembly instructions also available at Clever Chameleon. Please be copyright respectful and share the link not the pattern.



Page 1
Join pattern
to Page 2
along the line,
aligning arrows

Check your print out!
This box must
measure 1" square
or your appliqué will be
the wrong size!!





Join pattern
to Page 1
along the line,
aligning arrows

