

Garden Bath Joy Block Pattern

Dione Gardner-Stephen, ©2020 All rights reserved.

dione@cleverchameleon.com.au

This pattern was released as part of the 2020 "It's A Garden Party" row along
hosted by Seams to be Sew: www.seamstobesew.com.

Finished size: 12" x 18"



© 2020

Clever Chameleon

cleverchameleon.com.au

Downloaded from <https://www.cleverchameleon.com.au/garden-party/>

Please be copyright respectful and share the link, not the pattern.

Garden Bath Joy Block Pattern

Dione Gardner-Stephen, ©2020 All rights reserved
www.cleverchameleon.com.au/garden-party/



© 2020
Clever Chameleon
cleverchameleon.com.au

Please read all the instructions before beginning.

Materials required:

I used Northcott fabrics for the background, border and bird bath of the pattern cover example.

You will need:

1/2 yd of a grass green fabric (Northcott 9025-76)

1/4 yd of a sky blue fabric (Northcott 39303-62)

1/8 yd of a light yellow fabric (Northcott 9030-51)

Coloured fabric scraps for appliqués and small pieced details

Fusible adhesive for appliqués

Paper for paper-piecing, printer

Please note that your fabric needs may differ depending on directional prints and your paper-piecing experience/method.

Construction Notes:

Basic paper-piecing and appliqué knowledge is assumed by this pattern, general advice is not provided.

This pattern is formatted to print successfully on both US Letter and A4 paper.

Make sure you print this file at 100% of the original size. Ensure that your print out is the correct size before you begin by checking the size of the one inch squares provided.

Three of the paper foundation templates are too large to print on a single page. These must be assembled prior to starting by aligning pages 2 and 3 at the red line. Join the overlapping pieces with a glue stick. Allow to dry completely before using.

Finishing:

Once you have completed all the paper-pieced units A to FF, sew them together as indicated in the seam allowances, (Steps 1 to 21). Then sew unit A-D to unit E-R. Sew unit A-R to unit S. Sew unit A-S to unit T-AA. And finally sew unit A-AA to unit BB-FF.

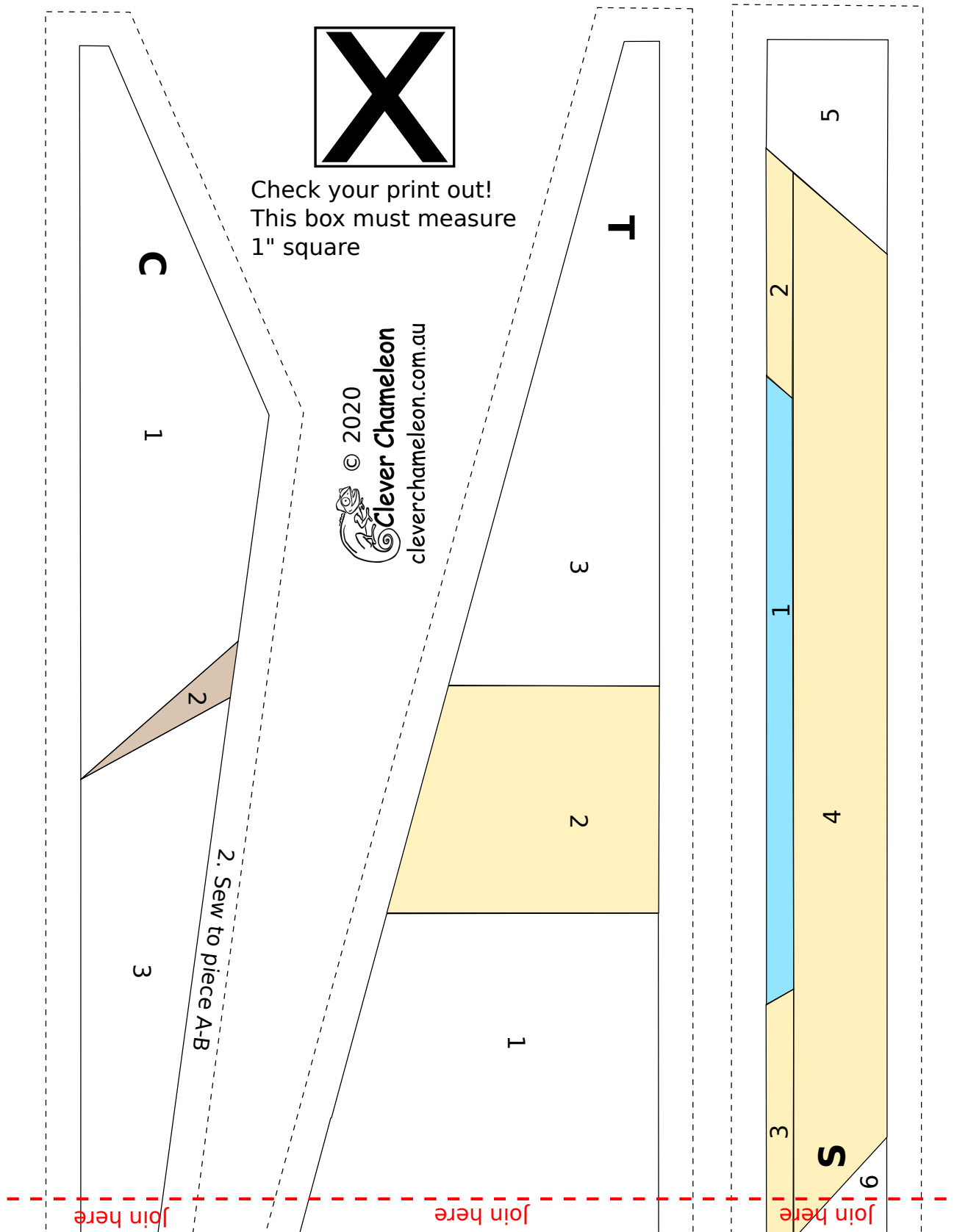
Cut two blue fabric strips of 2" x 15.5". Sew to the sides of the paper-pieced block, trim flush. Cut two blue fabric strips of 2.5" x 13". Sew to the top and bottom of the block. Trim block to an unfinished size of 12.5" x 18.5".

Trace each appliqué shape directly onto paper-backed fusible adhesive (shapes are already reversed).

Fuse traced shapes to fabric scraps according to the instructions provided by your fusible adhesive manufacturer. Place onto paper-pieced block and fuse to adhere. Secure the appliqués using your favourite appliqué method. Embroider or draw details onto the block to complete the project. Enjoy!

Garden Bath Joy Block Pattern

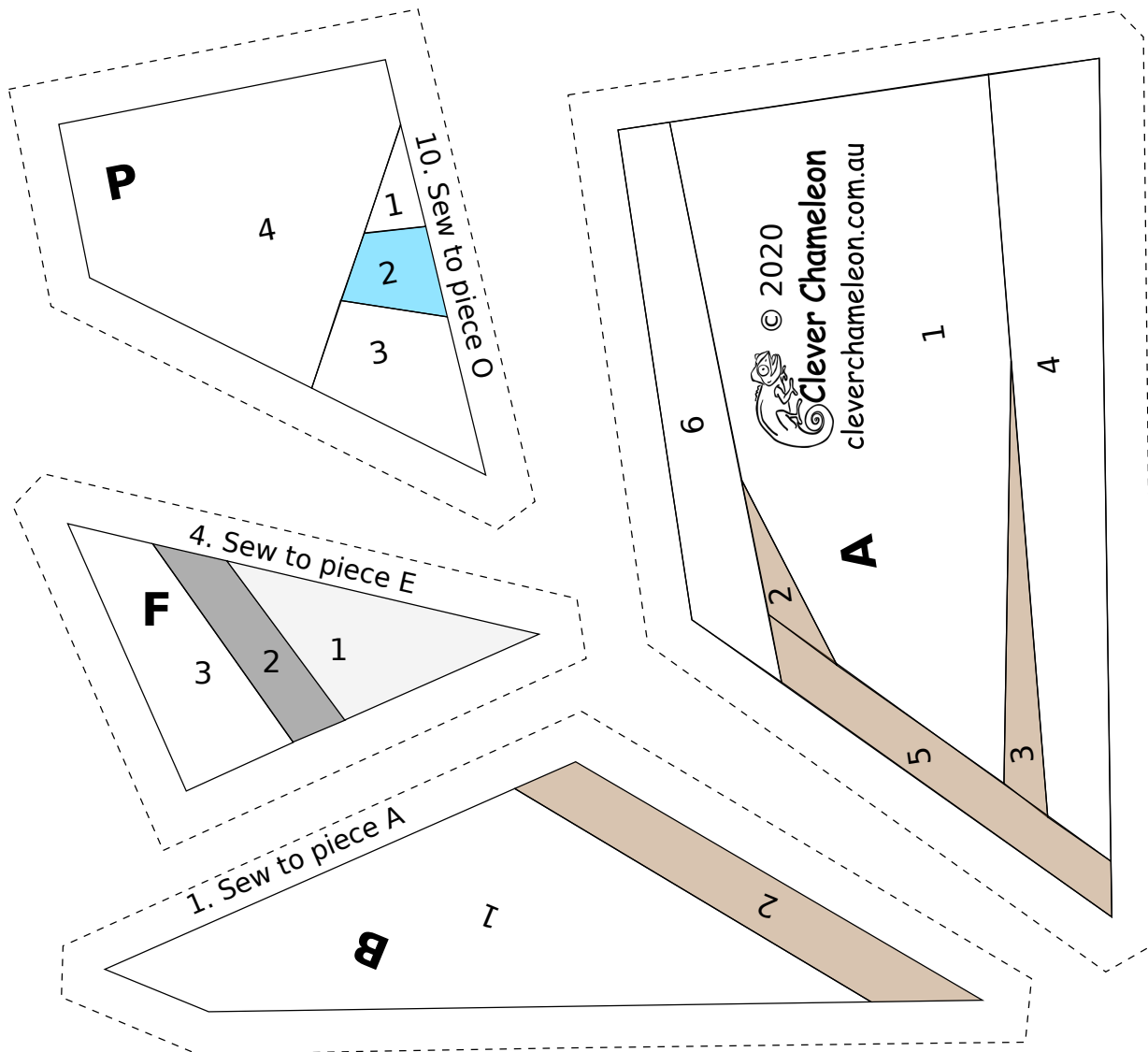
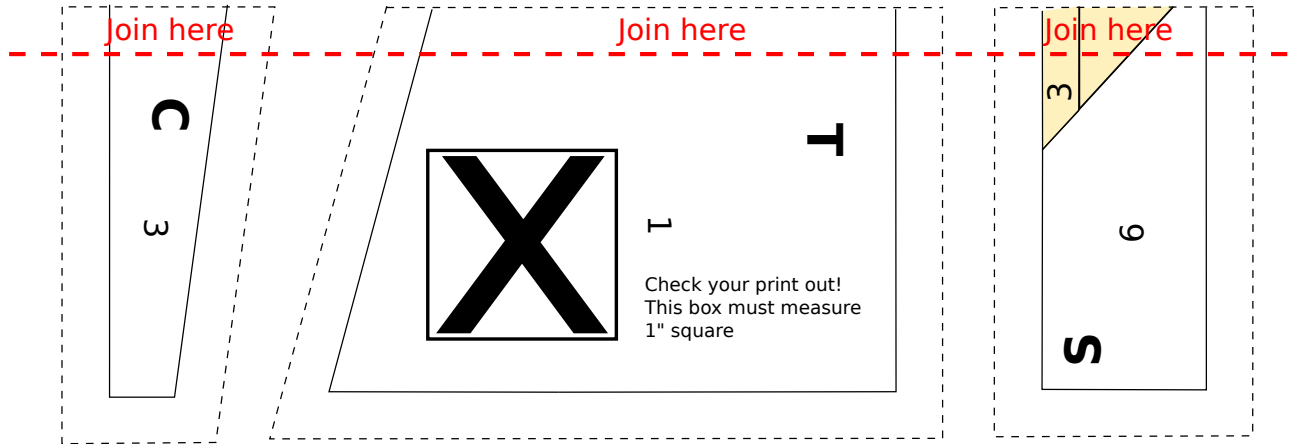
Dione Gardner-Stephen, ©2020 All rights reserved.
www.cleverchameleon.com.au/garden-party/



Garden Bath Joy Block Pattern

Dione Gardner-Stephen, ©2020 All rights reserved.

www.cleverchameleon.com.au/garden-party/

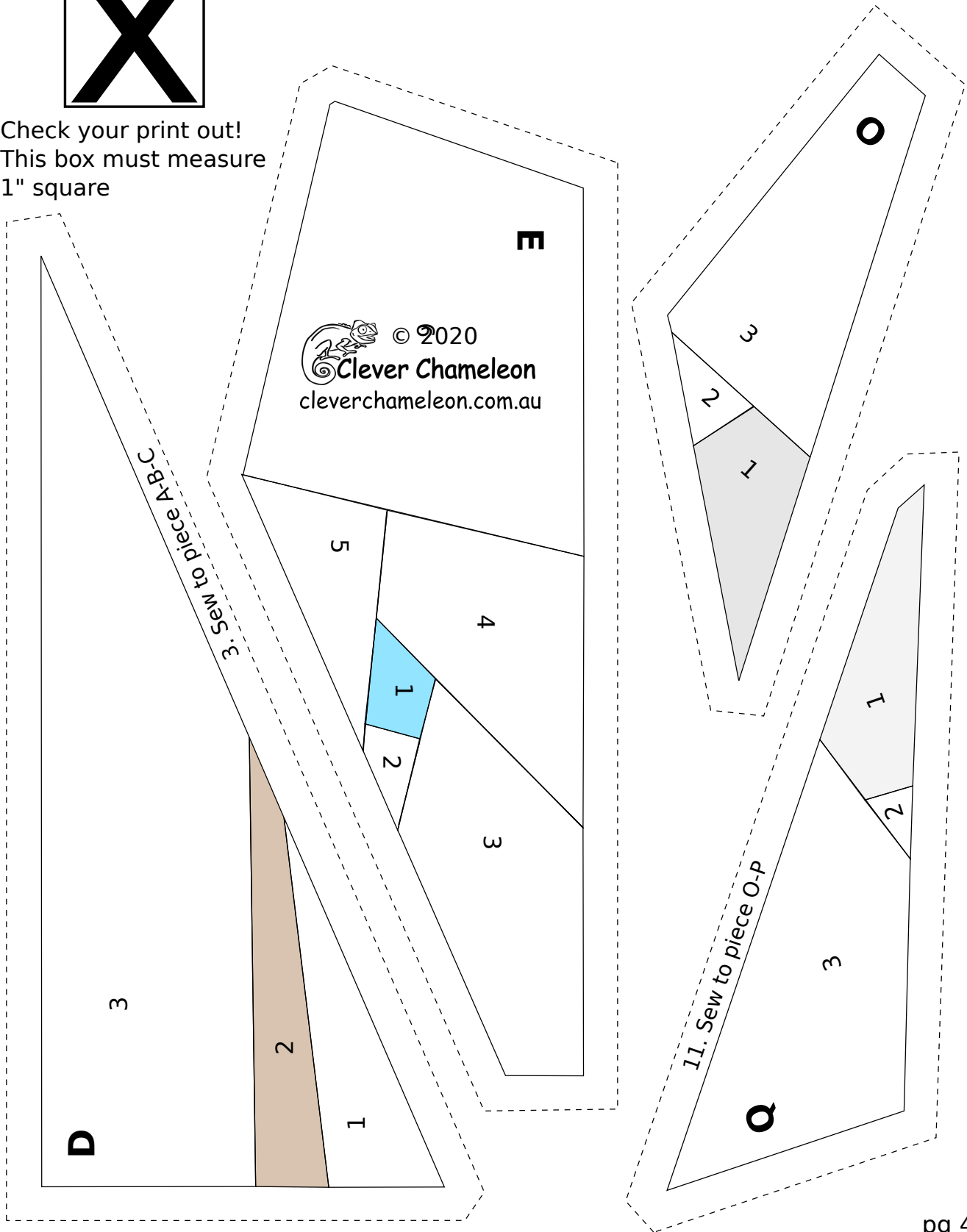


Garden Bath Joy Block Pattern

Dione Gardner-Stephen, ©2020 All rights reserved.
www.cleverchameleon.com.au/garden-party/



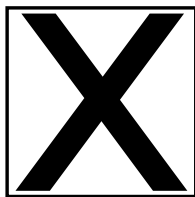
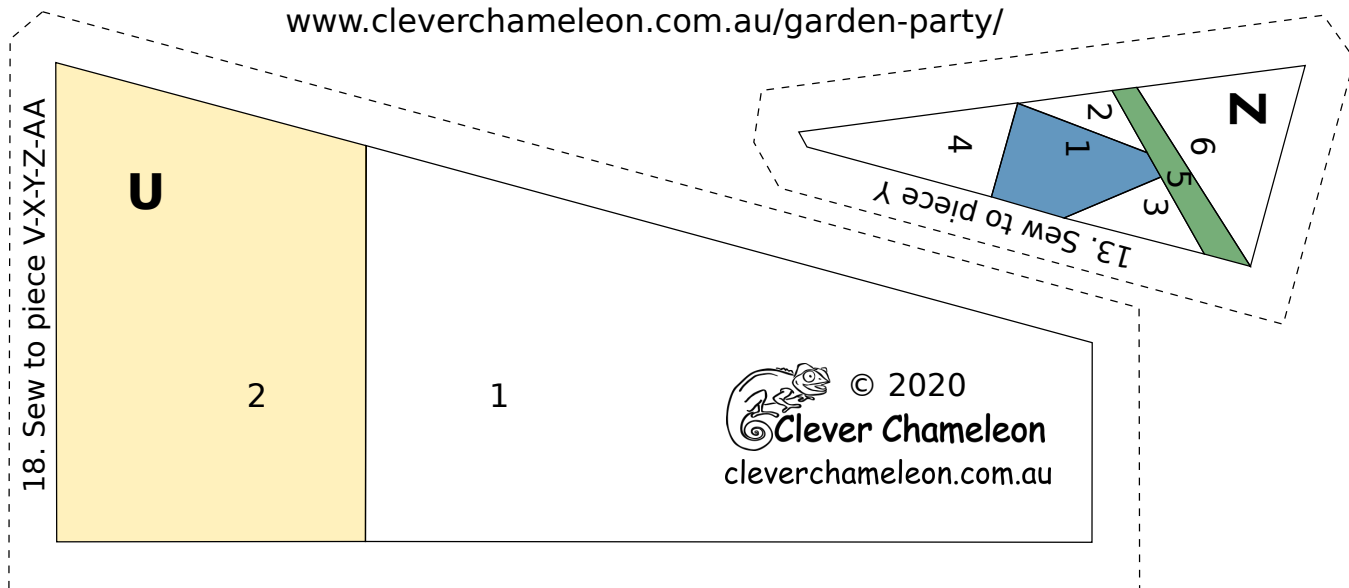
Check your print out!
This box must measure
1" square



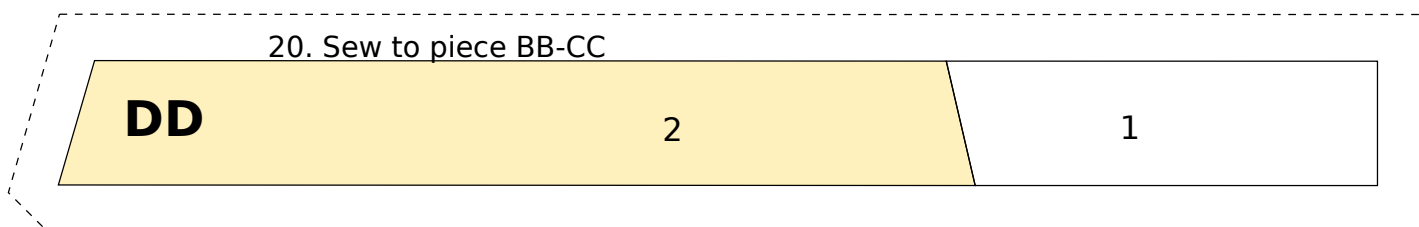
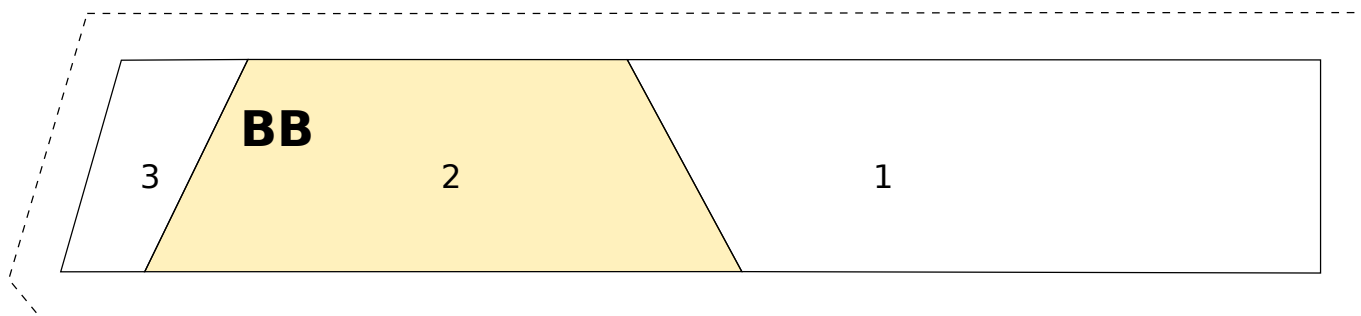
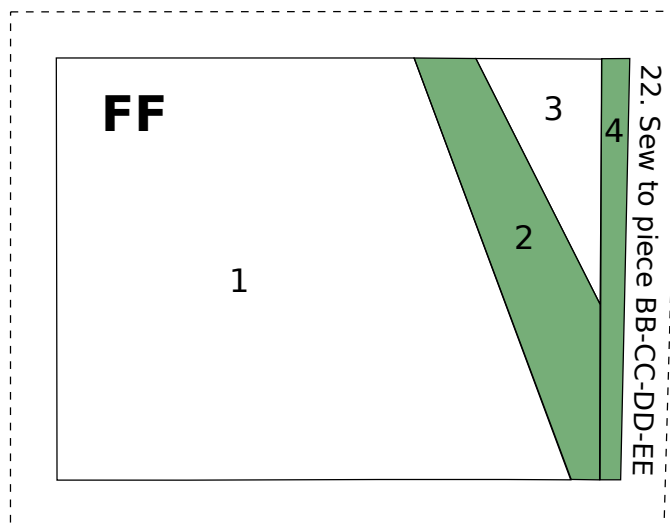
Garden Bath Joy Block Pattern

Dione Gardner-Stephen, ©2020 All rights reserved.

www.cleverchameleon.com.au/garden-party/



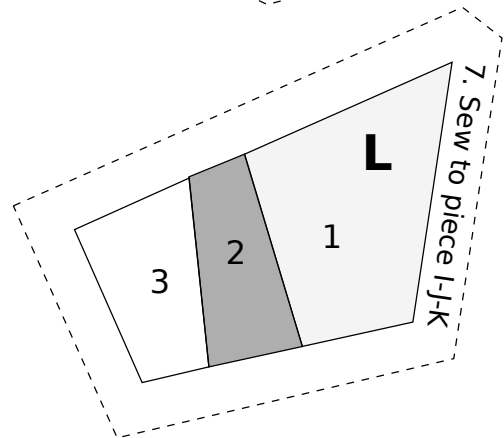
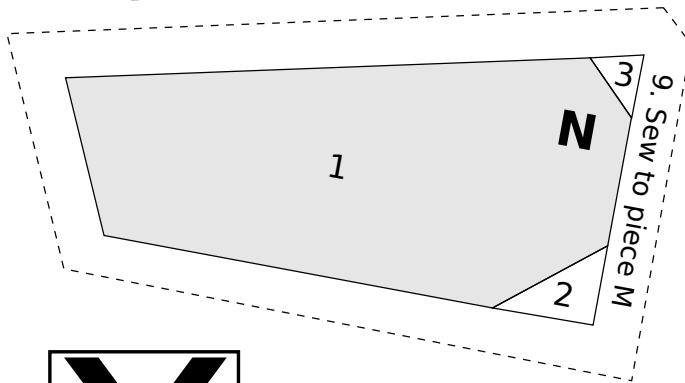
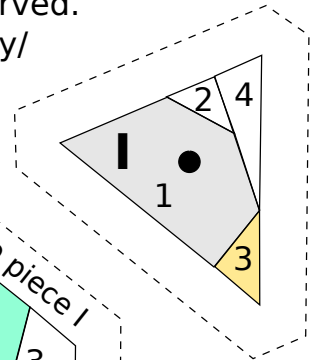
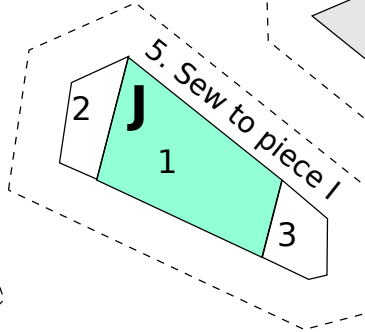
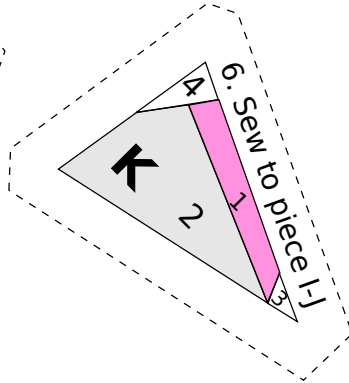
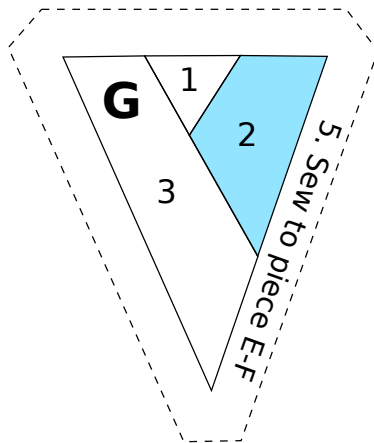
Check your print out!
This box must measure
1" square



Garden Bath Joy Block Pattern

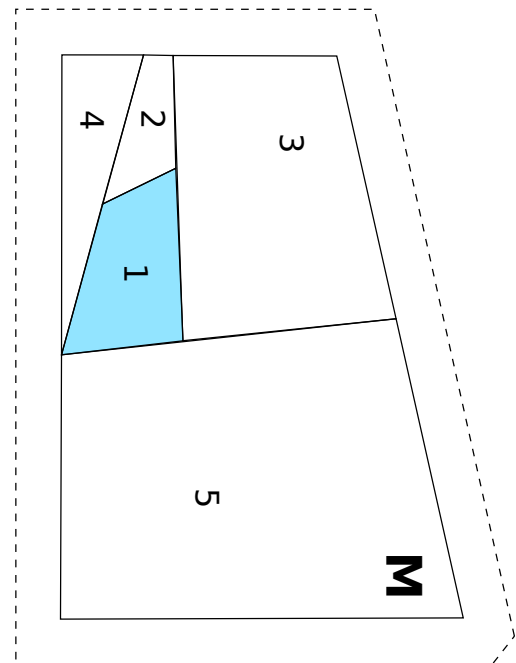
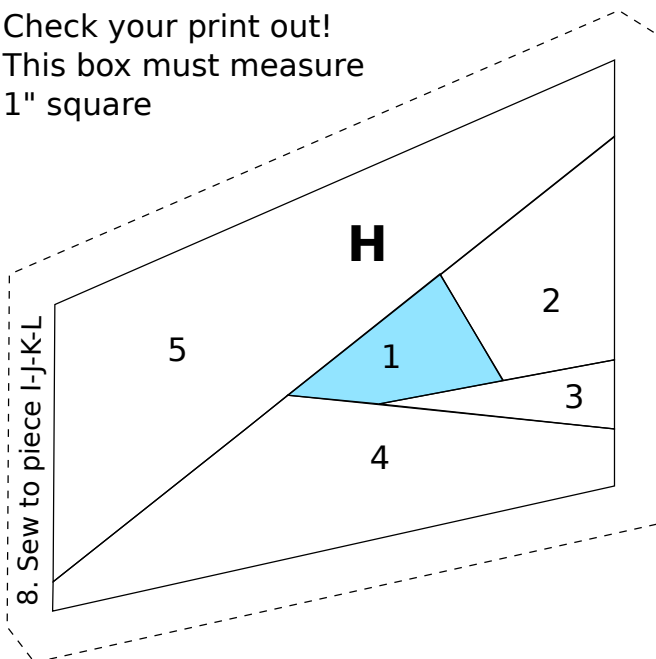
Dione Gardner-Stephen, ©2020 All rights reserved.

www.cleverchameleon.com.au/garden-party/



Check your print out!
This box must measure
1" square

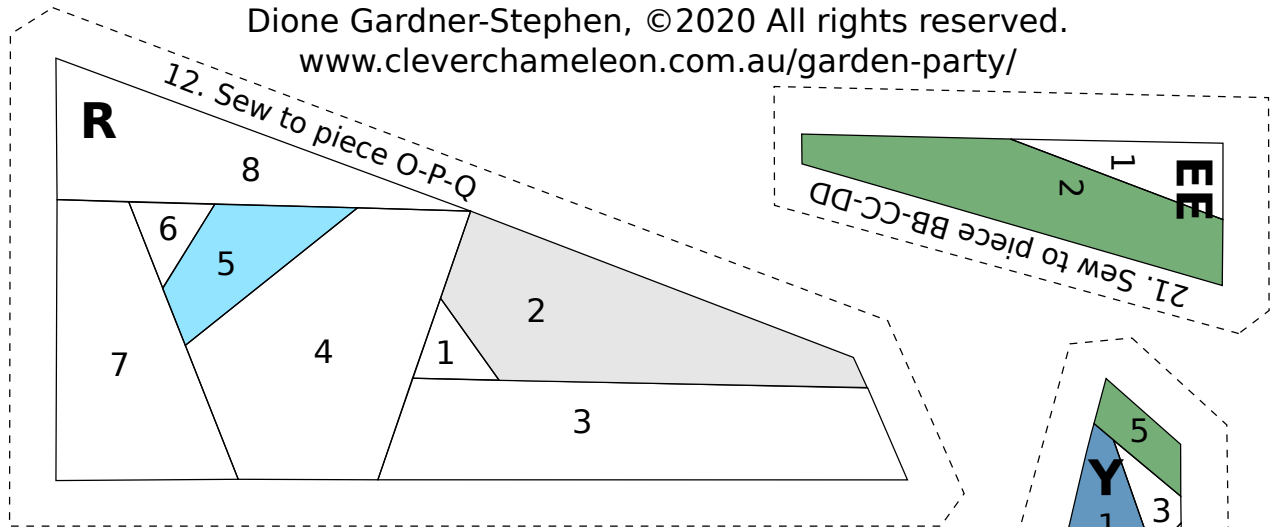
© 2020
Clever Chameleon
cleverchameleon.com.au



Garden Bath Joy Block Pattern

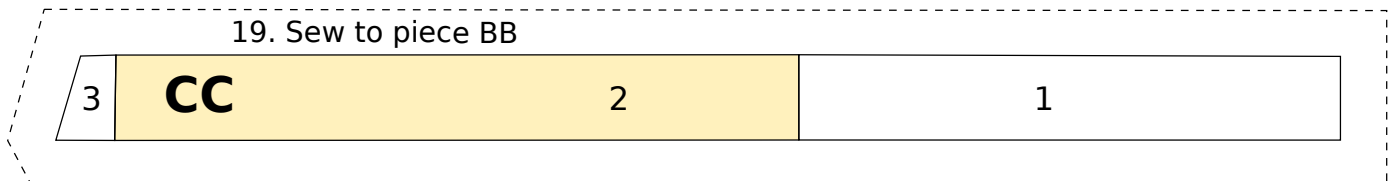
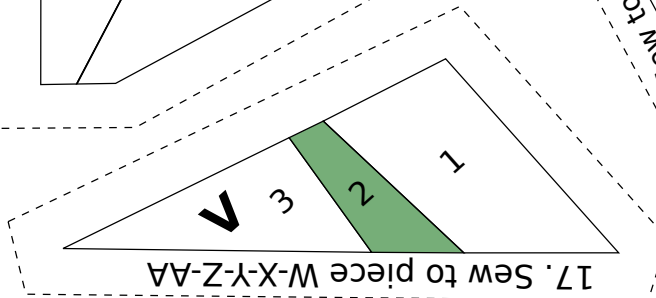
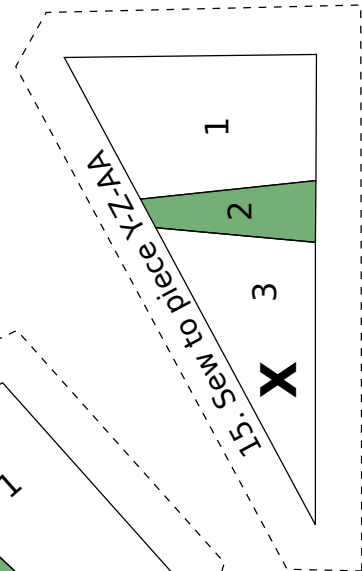
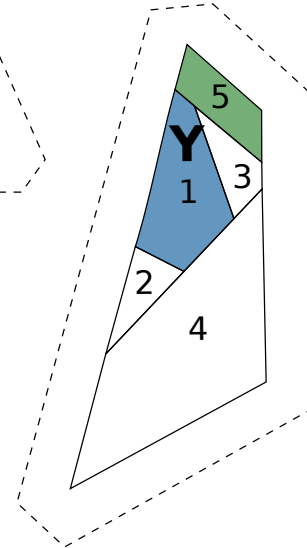
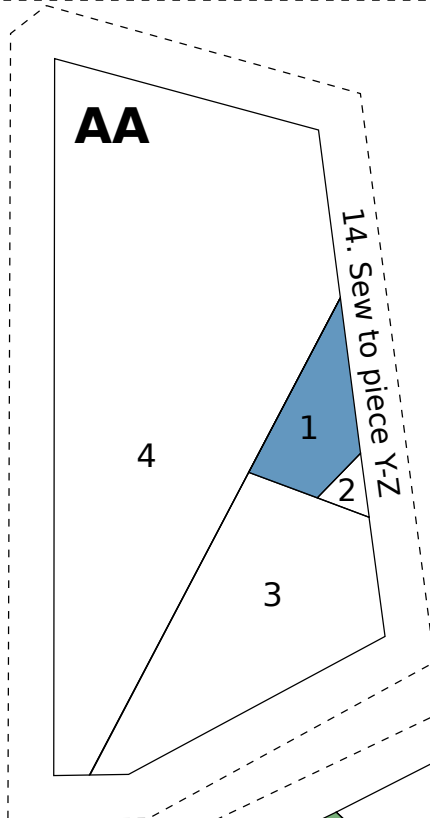
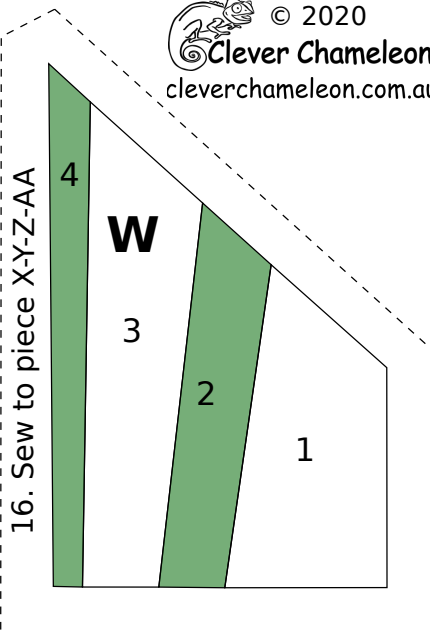
Dione Gardner-Stephen, ©2020 All rights reserved.

www.cleverchameleon.com.au/garden-party/



Check your print out!
This box must measure
1" square

© 2020
Clever Chameleon
cleverchameleon.com.au



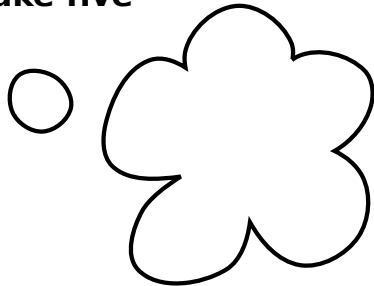
Garden Bath Joy Block Pattern

Dione Gardner-Stephen, ©2020 All rights reserved.

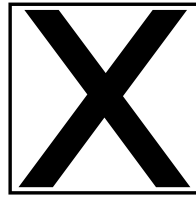
www.cleverchameleon.com.au/garden-party/

Tree Blossom Appliqué Shapes

- make five



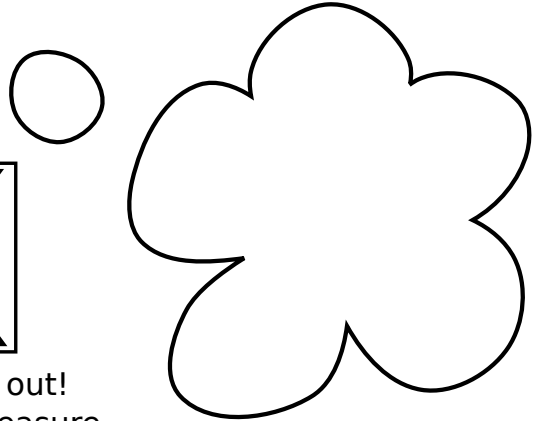
© 2020
Clever Chameleon
cleverchameleon.com.au



Check your print out!
This box must measure
1" square

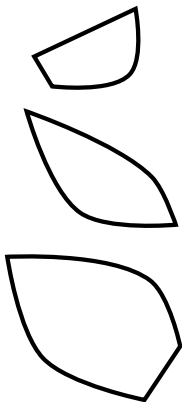
Flower Appliqué Shapes

- make four



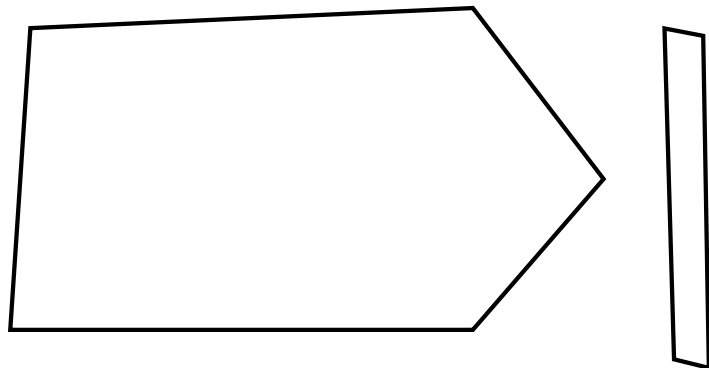
Leaf Appliqué Shapes

- make one set



Optional Sign Post Appliqué Shapes

- make one set



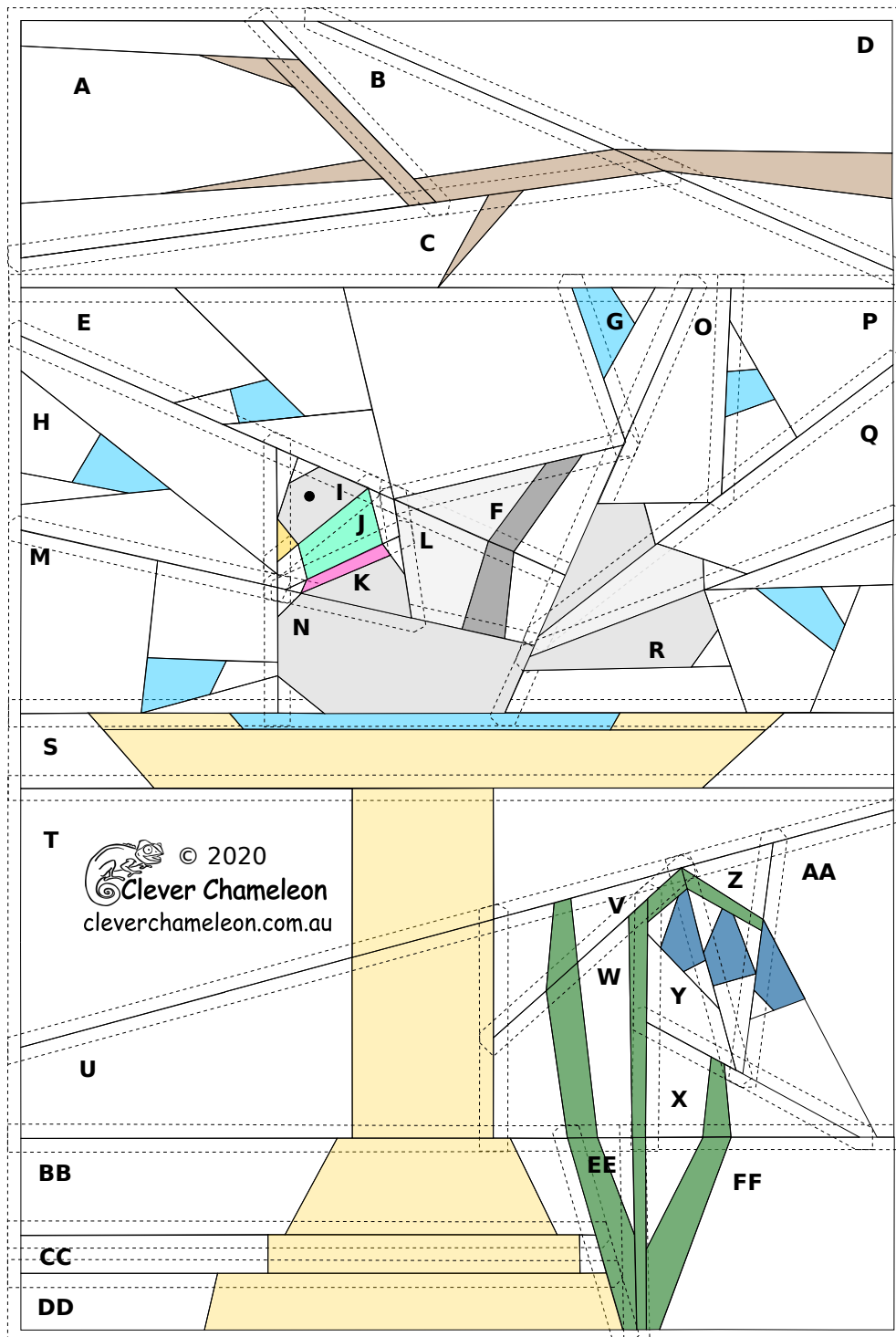
Suggested Sign Writing (feel free to write whatever your heart fancies on your sign!)



Garden Bath Joy Block Pattern

Dione Gardner-Stephen, ©2020 All rights reserved.
www.cleverchameleon.com.au/garden-party/

Key for paper-pieced block (50% original size).



Garden Bath Joy Block Pattern

Dione Gardner-Stephen, ©2020 All rights reserved.
www.cleverchameleon.com.au/garden-party/

Key for placing appliqué motifs (50% original size)

